

# Rolltalk Designer Technical Guide 8

---



## Table of contents

General.....	3
Audience .....	3
Installation folder .....	3
System Requirements .....	3
Rolltalk Designer Software .....	3
Rolltalk Designer used with additional video devices .....	3
License management .....	4
Demo license .....	4
How to order a license key .....	4
Licenses .....	5
Moving a license from one machine to another.....	5
Recycling Rolltalk.....	6
Upgrading.....	6
Files for distribution.....	6
File format and Micro Rolltalk .....	6
Backup routine .....	6
Creating a system image after first user setup.....	6
Restore from first user setup .....	7
Weekly backup.....	7
Rolltalk Factory Restore .....	8
Important before you begin.....	8
Starting Rolltalk Factory Restore .....	8
Running Rolltalk Factory Restore .....	8
Known problems .....	11
Web-camera and eye control.....	11

## General

### Audience

This document is written for technical people.

### Installation folder

In this guide, we often refer to files and programs located in the Rolltalk Designer installation folder.

If not changed during installation, it will be:

C:\Rolltalk\Rolltalk Designer\`<Language code>`\

Where `<Language code>` is

- NO: Norwegian
- SE: Swedish
- DK: Danish
- US: English

From now on referred to as `<Installation folder>`.

## System Requirements

### Rolltalk Designer Software

OS: Vista, Windows 7, Windows 8 or later

RAM: 1 GB or more

Processor: Atom Z2760, i3 or better

Free disk space: 5 GB or more

### Rolltalk Designer used with additional video devices

If Rolltalk Designer is used on machines with additional video devices like Eye control, video recording, Skype or live webcams etc., we recommend:

OS: Windows 7, Windows 8 or later

RAM: 2 GB or more

Processor: Atom D525, i5 or better

Free disk space: 20 GB or more

## License management

### Demo license

Rolltalk Designer ships with 60 days demo license, if no other licenses are ordered.

The demo license enables access to most features in Rolltalk Designer, except Printing, Environmental Control, Wheelchair functions, Technical settings etc.

### How to order a license key

Rolltalk Designer has introduced a new license system. We provide free upgrades from earlier versions, but require customers to order the new license key from Abilia.

Find your order schema:

Norwegian: <http://www.abilia.no/faq/faq.aspx>

Swedish: <http://www.abilia.se/faq/faq.aspx>

Danish: <http://www.abilia.dk/faq/faq.aspx>

English: <http://www.abilia.org.uk/faq/faq.aspx>

When you order a new license key, please provide information about your existing products installed on the machine.

- Current Rolltalk Designer license number/serial number.
- Picture library PCS?
- IntelliGaze?
- Micro Rolltalk?
- School or Institution?

Your new license keys will be sent to the E-mail address you provided. The license keys' file extension ".xrd" is associated with LicenceActivator.exe. They are automatically installed when double clicked.

After installing the new license keys, make sure the machine is connected to the Internet, and start Rolltalk Designer. The license then activates and locks the software to the machine.

A license key can be installed on 5 machines, related to the same user. The license key cannot be used for more than 5 activations.

## Licenses

License	Comment	Features		Products				Modules					
		PC's	Edit	Micro Rolltalk	MemoPlanner /Nova	Pegasus	PCS	Printing	IR	Wheelchair	IntelliGaze	Mobil	(Internet)
Demo	60 days	5	X						X	X	X	X	X
RolltalkBasic	Compact	5	X					X	X			X	X
RolltalkPCS	m/PCS	5	X				X	X	X			X	X
RolltalkIntelligaze	Compact m/eye control	5	X					X	X		X	X	X
RolltalkIntelligazePCS	m/PCS	5	X				X	X	X		X	X	X
RolltalkPC	PC version	5	X					X			X	X	X
RolltalkPCPCS	PC version m/PCS	5	X				X	X			X	X	X
RolltalkPCIRPCS	PC version med IR and PCS	5	X				X	X	X		X	X	X
Micro Rolltalk				X									
MemoPlannerNova	Locked version	1			X			X	X		X	X	X
Pegasus	Locked version	1				X		X	X				X
Institution (schools)	Defines max users	nn	X					X				X	X
InstitutionPCS	m/PCS	nn	X				X	X				X	X
RolltalkNoirNoMobil	Nederland	5	X					X			X		X
RolltalkNoirNoMobilPCS	Nederland m/PCS	5	X				X	X			X		X
Wheelchair		1								X			
IntelliGaze		1									X		

### Moving a license from one machine to another

You are able to move a license key from one machine to another. You first need to deactivate the current key, and then activate it on the new machine.



You will find an activation/deactivation tool in this folder:

<Installation folder>\LicenceActivator.exe

1. Run LiceneceActivator.exe on the machine you want to move from, and select Deactivate.
2. Copy all the files from folder Rolltalk/Rolltalk Designer/Activation Files, from old to new machine.
3. Run LiceneceActivator.exe on the new machine and select Activate.

## Recycling Rolltalk

When recycling a Rolltalk to a new user, you need to order a new license number.

The old license could be activated on multiple machines, and we want the new user to have the possibility to install the software on up to 5 new machines.

Please let us know that you are recycling when you order the new license key.

## Upgrading

### Files for distribution

Update current user program installations, created with "Files for distribution", by replacing Install6.exe with RDInstall.exe, located in the Rolltalk Designer folder:

<Installation folder>\RDInstall.exe

Update the "Install.inf" file with new program name and installation folder:

Exefile=<Installation folder>\Rolltalk Designer NO.exe

### File format and Micro Rolltalk


The file format used by Rolltalk Designer 8.0 has changed from earlier versions. You must upgrade Micro Rolltalk to the latest version to read RD 8.0 user files.

## Backup routine

### Creating a system image after first user setup

After Rolltalk Designer is installed, with optional packages like text-to-speech engines and picture libraries, the user program is customized with input device settings etc, it is important to make a system backup in Windows.

The backup should be located on an external storage device.



Open Windows Control Panel and start the program “Backup and Restore”. Check your Windows documentation if this description differs or your Windows version.


1. Select “Create a system image”
2. Select an external storing device
3. Select Next-> and confirm which volumes to backup.
4. Start Backup.

### **Restore from first user setup**

After completed the “Create a system image after first user setup”, you can use the system image to restore the contents of your computer if your hard disk or entire computer ever stops working.

#### **Warning!**

When you restore your computer from a system image, it's a complete restoration. You can't choose individual items to restore, and all of your programs, system settings, and files are replaced with those on the system image.

1. Open Recovery by clicking the Start button , and then clicking Control Panel. In the search box, type recovery, and then click Recovery.
2. Click Advanced recovery methods.
3. Click Use a system image you created earlier to recover your computer, and then follow the steps.

### **Weekly backup**

The Rolltalk Designer installation program creates a backup routine running once a week. It is scheduled to Mondays at 5 pm, when we expect the computer to be turned on, and not used for school or work.

The backup routine includes user data and all user programs located in the Programs folder.

To restore from the weekly backup, you need to run:

```
<Installation folder>\Tools\RDrestoreNO.bat
```

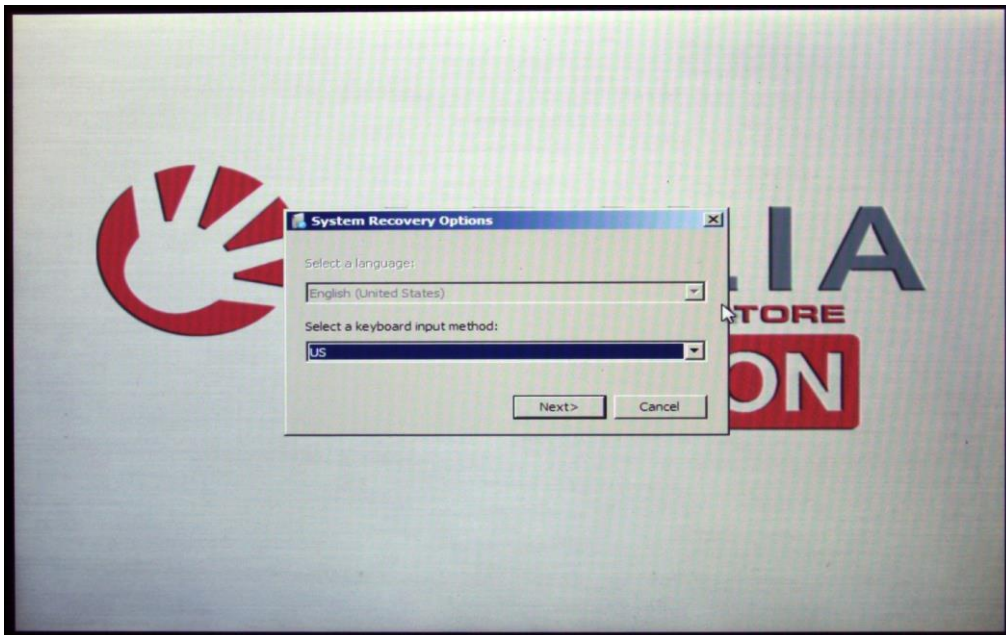
## Rolltalk Factory Restore

### Important before you begin

- Make sure the Rolltalk is connected to its power adapter and that the battery is fully charged (the battery indicator LED found in the upper left corner is green).
- Connect a USB keyboard to the Rolltalk. You can use a USB mouse for easier menu navigation, but a USB keyboard is required.

### Starting Rolltalk Factory Restore

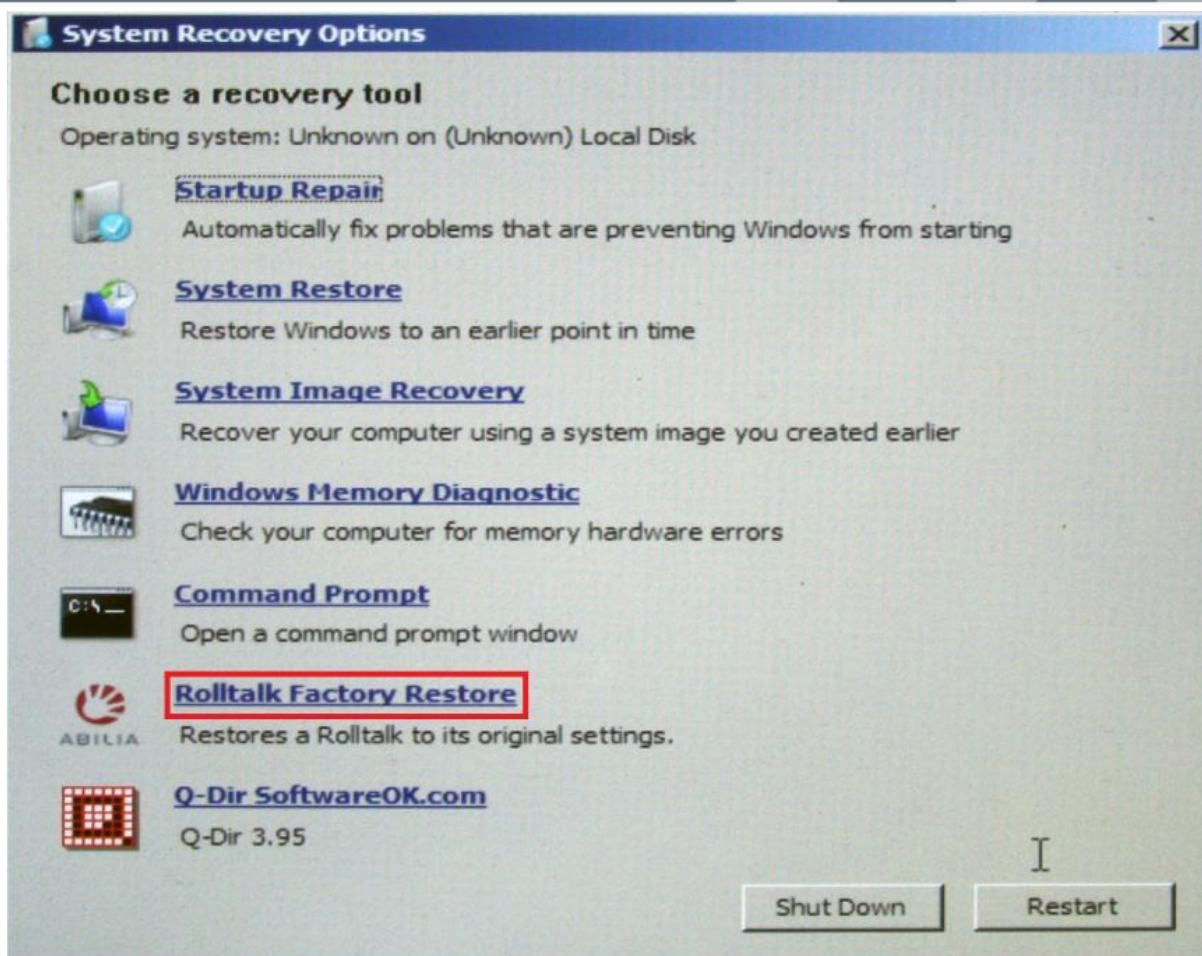
- Power on the Rolltalk
- Once the Paceblade splash screen disappears press the “F3” key on your keyboard.
- Select the appropriate keyboard input method from the dropdown menu and click “Next”.



### Running Rolltalk Factory Restore

- Select “Rolltalk Factory Restore” from the “System Recovery Options” menu. This will bring up the “Abilia Factory Recovery” program.





- Press the “y” key on your keyboard to proceed with the factory restore.

```

X:\sources\recovery\Tools\RFR.exe
[A B I L I A F A C T O R Y R E S T O R E]

WARNING: THIS PROGRAM WILL RESTORE THE ROLLTALK
TO ITS FACTORY SETTINGS. ALL DATA ON DRIVE C:
WILL BE LOST.

ARE YOU SURE YOU WANT TO DO THIS?
[Y]es or [N]o?

```

- IMPORTANT: selecting “yes” will restore the Rolltalk to its factory settings and delete all data on drive C:
- Rolltalk Factory Restore will now display the progress of the recovery process. Please do not power off or unplug the Rolltalk while the recovery process is running.

```

X:\sources\recovery\Tools\RFR.exe
The type of the file system is NTFS.
QuickFormatting 431434M
Creating file system structures.
Format complete.
421.3 GB total disk space.
421.2 GB are available.

ImageX Tool for Windows
Copyright (C) Microsoft Corp. All rights reserved.
Version: 6.1.7600.16385

[ 100% ] Applying progress
Successfully applied image.
Total elapsed time: 33 min 59 sec

Done.
Press any key to continue . . .

```

- Once the Rolltalk Factory Restore process is done it will automatically exit back to the “System Recovery Options” menu. It might display the following error message: “The tool failed to run. Try choosing another tool.” Please ignore this error message and click “OK”.

- Click “Shut down” to shut down the system, it will start up with the default factory settings the next time you power it on, or click “Restart” to restart with the default factory setting immediately.
- If the Rolltalk is recycled to a new user, make sure no backup data is left on the backup-drive (D:)

## Known problems

### **Web-camera and eye control**

It is a known problem, that running web camera and eye control at the same time may cause unstable behavior.

We recommend connecting the web camera to USB 1.0 port on the Rolltalk Module, and video resolution set no higher than necessary.