



GEWA One

Reconditioning instructions

Art. nr: 461630

Software version 3.5 or later

Table of Contents

Introduction	3
Safety instructions and product liability	3
Warranty	3
Overview of GEWA One	4
Included parts	4
Included documents	4
Overview of Multibox	5
Overview of mobile device	6
Recondition GEWA One	7
Collect all included parts	7
Do a check of the general functionality	8
Do a function test	9
Power off GEWA	10
Clean GEWA One	10
Put all parts in the box	10
Accessories and spare parts	11
Contact information	13

Introduction

This document is intended for persons who are to recondition GEWA One.

Reconditioning a product is a common part of the product's circulation. To recondition the product, you need a basic understanding of the product's function and use.

After reconditioning, the product's function remains and all user data is deleted.

When references to the user manual are made in this document, the "User manual_GEWA One" is referred to.

Safety instructions and product liability

See the section *Important information* in the user manual.

Warranty

Errors covered by the warranty must be corrected by Abilia AB for the warranty to apply.

The warranty on the product can be cancelled if the product is opened or changed in any way.

Always contact Abilia AB if there is any uncertainty about the warranty.

Overview of GEWA One

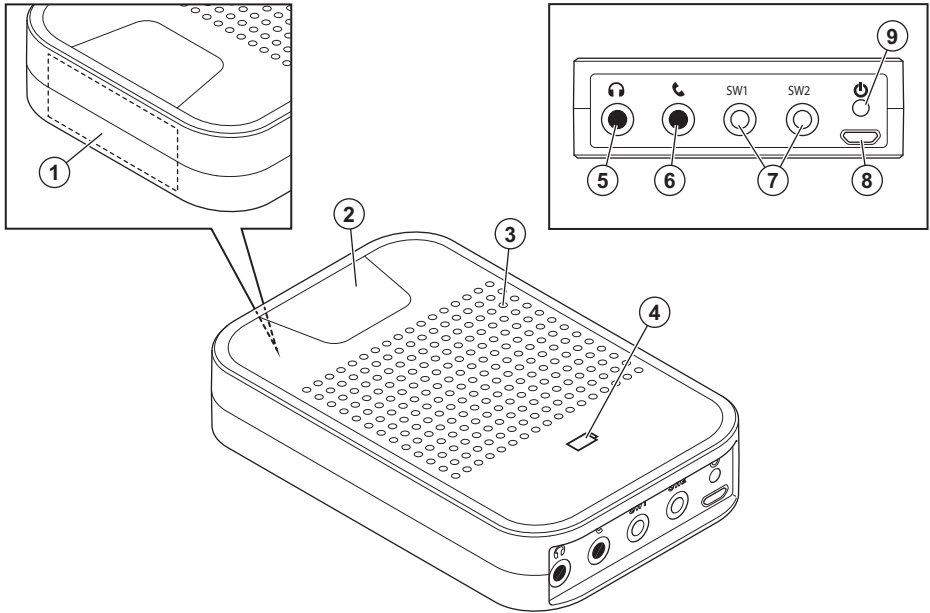
Included parts

- Mobile device
The smartphone is configured for GEWA One. Applications cannot be installed or removed.
- GEWA Multibox
- GEWA Smart cable
- Medical power adapter
- USB-A to USB-C long cable (2m)
- SIM card installation tool
- 2 pcs. Dual Lock strips to attach the GEWA Smart cable to the Holder GEWA One/Connect
- Voucher with license key

Included documents

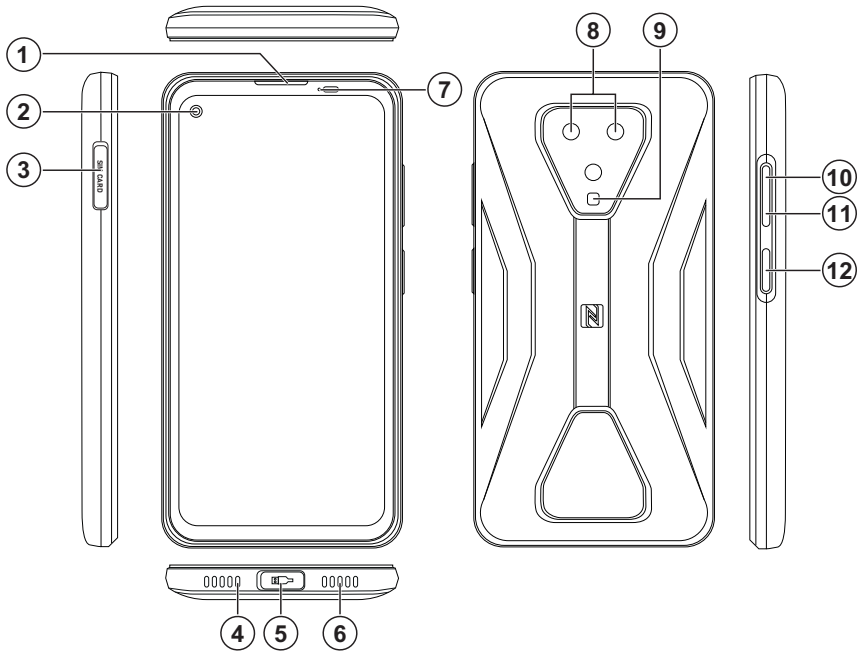
- User manual

Overview of Multibox



1. Receiver of IR signals for IR recordings
2. Activity indicator
3. Speaker (not in use)
4. Battery status indicator
5. Headset jack (not in use)
6. Phone jack (not in use)
7. SW1/SW2, relay output and jack for external switch
8. Micro USB port for GEWA Smart cable
9. Power button

Overview of mobile device



1. Receiver
2. Front camera (not in use)
3. SIM card slot
4. Microphone
5. USB-C port
6. Speaker
7. LED spotlight (not in use)
8. Rear camera (not in use)
9. Flashlight (not in use)
10. Volume +
11. Volume -
12. Power button

Recondition GEWA One

Collect all included parts

Make sure that all parts are included and intact. If any part is missing, you can supplement with accessories or spare parts, see section *Accessories and spare parts* on page 11. If any of the accompanying documents are missing, download and print them from Abilia's website, see www.abilia.com/intl/manuals.

The box must contain the following:

- Blackview BL5000 5G Rugged Phone
- GEWA Multibox
- GEWA Smart cable
- GEWA power supply
- USB-A to USB-C long cable (2m)
- SIM card installation tool
- Dual lock part for Holder (25 x 50mm)
- Dual lock part for Smart cable (17 x 45mm)
- Manual
- License voucher

i *NOTE: Make sure that you have the correct article number for the Multibox: 461177. You can find the article number on the label on the back of the Multibox.*

Do a check of the general functionality

Check the parts

1. Make sure that all the components are there and undamaged.
If there are missing or damaged components, exchange them for new ones.

Charge the batteries



WARNING: Only use the original charger that is supplied with the product.

1. Make sure that the Smart cable is connected to the mobile device and the Multibox.
2. Put the small connector of the USB charger cable into the Smart cable.
3. Connect the battery charger to a power outlet.

Reset the Multibox

1. Push the power button (9) three times to reset the Multibox.
A sound indicates that it resets.

Set the mobile device back to factory settings

Follow the instructions in the Production instructions document to reset and reconfigure the mobile device. The Product instructions can be downloaded from www.abilia.com.

Do a function test

1. Make sure that the Multibox is connected with the GEWA Smart cable to the mobile device with the GEWA application installed on it, see *Connect the Multibox with the Smart cable* in the user manual.
2. Make sure that the Multibox is connected and has the correct firmware:
 - a. Open the GEWA app and make sure that the banner "Connect GEWA Multibox" is not shown.
 - b. Go into Edit mode and go to **Settings | Multibox**.
 - c. Make sure that the status of the Multibox is **Connected**.
 - d. Make sure that the firmware version of the Multibox is 37.X.
 - e. Change to Normal mode.
3. Make sure that the external switch connection works:
 - a. Connect an external switch to the socket for SW1 (7).
 - b. Press the control switch and check that scanning starts.
 - c. Long-press the control switch and check that the Longpress menu is shown.
4. Connect a GEWA Radio device like Andromeda Socket to the Multibox:
 - a. Open the GEWA Settings app and select GEWA Radio devices
 - b. Follow the instructions on the screen.
5. Make sure that the Multibox transmits Radio and IR signals when the GEWA app is used.
6. Test the Alert function:
 - a. Configure the Alert function, see *Configure the Alert function* in the user manual.
Select "GEWA IR signal" as type.
 - b. Press and hold the external switch for the configured number of seconds.
The Multibox sends a GEWA IR signal.
 - c. Make sure that the activity indicator (2) lights up with a blue light.
 - d. Make sure that the Multibox restarts with a beep.
7. Reset the Multibox again, see *Reset the Multibox* on the previous page.

Power off GEWA

1. Turn off the Multibox: push and hold the power button (9). A sound indicates that the Multibox is off.
2. Turn off the mobile device: push and hold the power button until the power menu opens and select "Power off".

Clean GEWA One

1. Turn off GEWA One.
2. Disconnect all cables.
3. Clean GEWA One with a moist soft cloth. If necessary, use a weak detergent for the Multibox.
4. Dry GEWA One with a dry cloth.

Put all parts in the box

Place the product in a protective bag to avoid scratches and dirt. Preferably use the product's original box.

If the original box is missing, use cardboard and bubble wrap as shock protection. Label the box with the same information as on the product label. The product name, article number and serial number must be included.

Accessories and spare parts

Article number	Name	Product type
461198	Holder GEWA One and Connect	Accessory
451030	Mini arm	Accessory
621966	Universal arm	Accessory
425657	Cable Dynamic Drive GEWA Connect/ GEWA One	Accessory
425658	Cable PG Drive GEWA Connect/ GEWA One	Accessory
425661	GEWA Smart cable	Spare part
462003	USB-A to USB-C long cable (2 m)	Spare part
462006	GEWA Power supply	Spare part
461177	GEWA Multibox	Spare part
461182	Battery Multibox	Spare part
461631	GEWA One mobile device (Blackview)	Spare part

Contact information

Sweden

Abilia AB, Råsundavägen 6, 169 67 Solna, Sweden
Phone +46 (0)8- 594 694 00 | support@abilia.se | www.abilia.se

Norway

Abilia AS, Tevlingveien 23, 1081 Oslo, Norway
Phone +47 23 28 94 00 | support@abilia.no | www.abilia.no

United Kingdom

Abilia UK Ltd, Unit 10 Buckingham Business Park, Swavesey,
Cambridge, CB24 4AE, United Kingdom
Phone +44 (0) 1954 281 210 | support@abilia.uk | www.abilia.uk

International

www.abilia.com/intl/get-products/distributors

